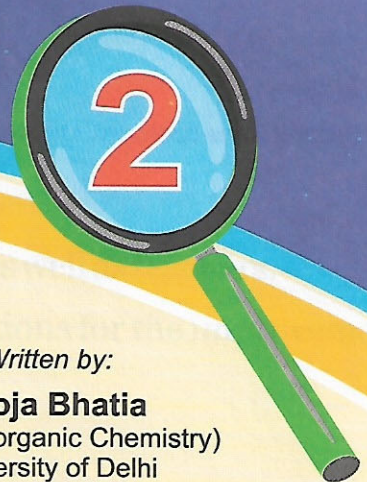


Evershine

Learn & Grow

SCIENCE

A book of Science



Written by:

Pooja Bhatia
M. Sc. (Inorganic Chemistry)
University of Delhi

EVERSHINE™ E^S P PUBLISHERS

Soni House, WZ-348, Nangal Raya, New Delhi-110046
PH.: 28111758, 28113958, Fax- 28112353
E-mail: evershinepub@gmail.com

Published by :

EVERSHINE PUBLISHERS

Soni House, WZ-348, Nangal Raya, New Delhi-110046

PH.: 28111758, 28113958, Fax- 28112353

E-mail: evershinepub@gmail.com

© All rights reserved with the publishers.

The contents, transparencies, illustrations and layout of this book are the sole property of **Evershine Publishers**, New Delhi and are copyright. Any reproduction in whole or in part in any form whatsoever is strictly prohibited.

Designed by :

Graphic Zone Books Pvt. Ltd., New Delhi



This book is meant for educational and learning purpose only. Every effort has been made to avoid errors and omission in this book. Any error or omission noted may please be brought to the notice of the publishers, which shall be taken care of in the next edition of this book. It is notified that neither the publisher nor the Author, Designer or Printer will be responsible for any mistake or omission in this book.

Preface

Science books are prepared to take the learners from rote memory to self-learning, making each learning experience unique. It is strictly based on the latest guidelines presented by the NCERT. The series provides a direct and stimulating way for young readers to access information on science and its linkage with the environment.

The books are designed in a child-friendly manner aiming to ensure that all learners acquire knowledge and understand the topics in a better way.

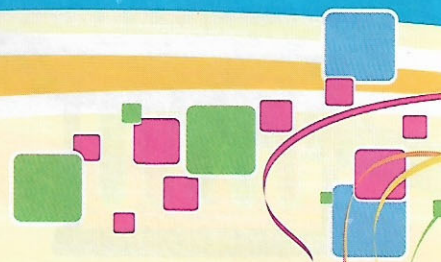
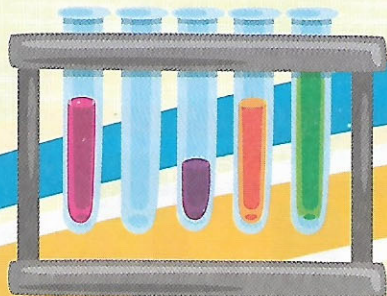
Key Features of the Series :

- Simple and lucid language to make learning easy.
- Self-explanatory illustrations for better understanding.
- **Fascinating Facts** to enhance knowledge.
- **Oral Questions** to give revision practice.
- Interactive and child-oriented approach.
- ‘**HOTS**’ to enhance higher order thinking skills.
- **Life Skills** to give additional knowledge.
- **Recap** for recapitulation.
- Guidelines for teachers for effective teaching.
- **Model Test Papers** to access the retention capacity of children.

It is hopeful that this series will be beneficial for both children as well as teachers.

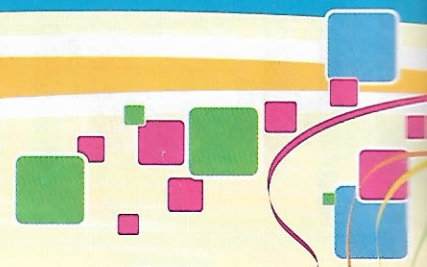
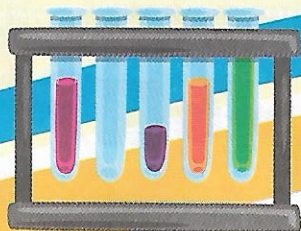
However, there is always a scope of betterment, so any suggestions for the improvement of the series will be highly appreciated.

— Publishers



Contents

Sr. No.	Chapter	Page No.
UNIT-I : PLANTS AROUND US		
1.	Types of Plants	5
2.	Uses of Plants	11
UNIT-II : ANIMALS AROUND US		
3.	Uses of Animals	19
	Model Test Paper-I	26
4.	Wild Animals	27
UNIT-III : OUR BODY		
5.	Bones and Muscles	34
6.	Eat Good, Stay Healthy	39
	Model Test Paper-II	44
7.	Housing and Clothing	45
8.	Keeping Safe	52
UNIT-IV : OUR EARTH		
9.	Air Around Us	59
	Model Test Paper-III	67
10.	Water	68
11.	Sun, Light and Shadow	79
UNIT-V : OUR UNIVERSE		
12.	Going to the Moon	83
13.	Rocks and Minerals	88
	Model Test Paper-IV	94
	Olympiad Questions { Mock Test-I }	95
	Olympiad Questions { Mock Test-II }	96





Types of Plants

Learning Outcomes

- ❖ Types of plants
- ❖ Parts of a plant
- ❖ Lifespan of plants

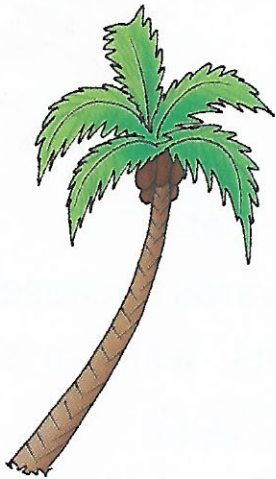
Types of Plants

There are many kinds of plants all around us. Some plants are big and some are small. Most of the plants are green in colour.

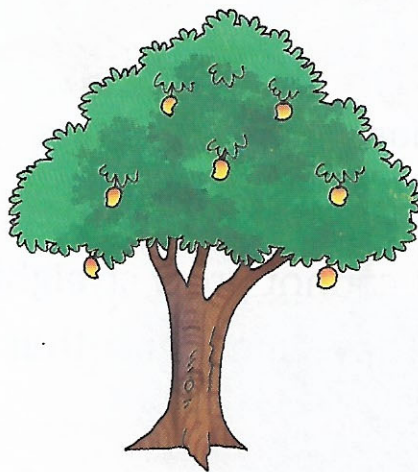
Here are the different types of plants :

1. Trees

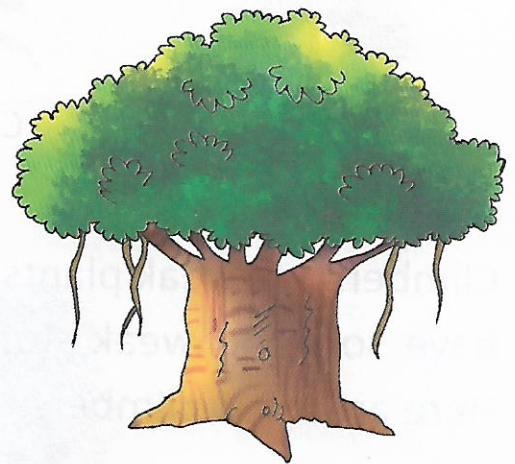
Trees are big and tall plants. They have a thick woody stem called the trunk. Trees usually live for many years.



Coconut tree



Mango tree



Banyan tree

Fascinating Fact

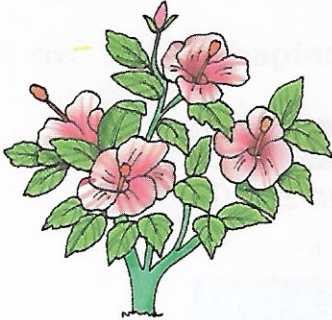
The world's tallest living tree is a *Coast Redwood tree* in California.

Oral Question

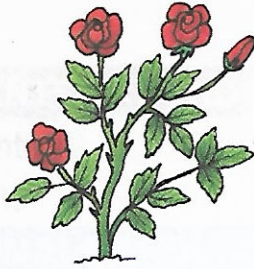
Which tree is worshipped in India?

Shrubs

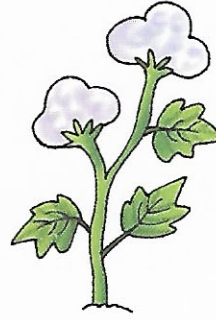
Shrubs are bushy plants. They are smaller than trees. They grow many branches near the ground. Shrubs also live for many years. Here are some shrubs :



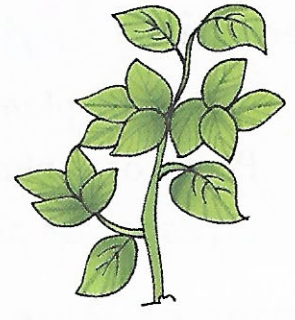
Hibiscus



Rose



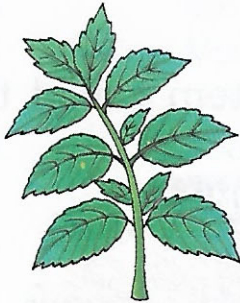
Cotton plant



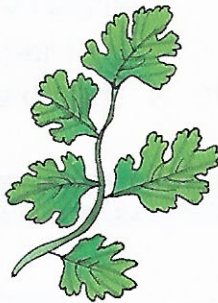
Bougainvillea

Herbs

Herbs are small plants with soft stems. They are seasonal plants. They live for one season or few months only. Here are a few herbs :



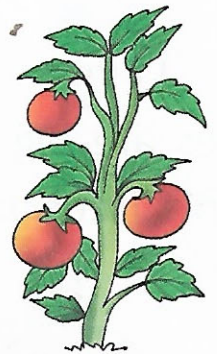
Mint



Coriander



Grass



Tomato

Climbers

Climbers are weak plants that cannot grow straight upwards because they have soft and weak stems. They climb on other plants, walls or sticks. Here are a few climbers:



Money plant

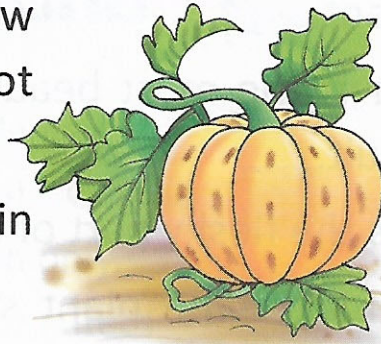


Peaplant

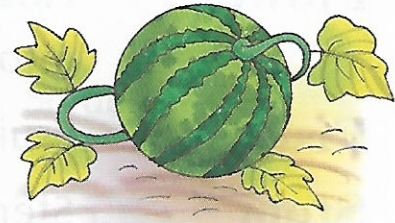
Creepers

Creepers are weak plants that grow along the ground. They cannot grow up even with a support.

Some of the creepers are pumpkin and watermelon.



Pumpkin plant



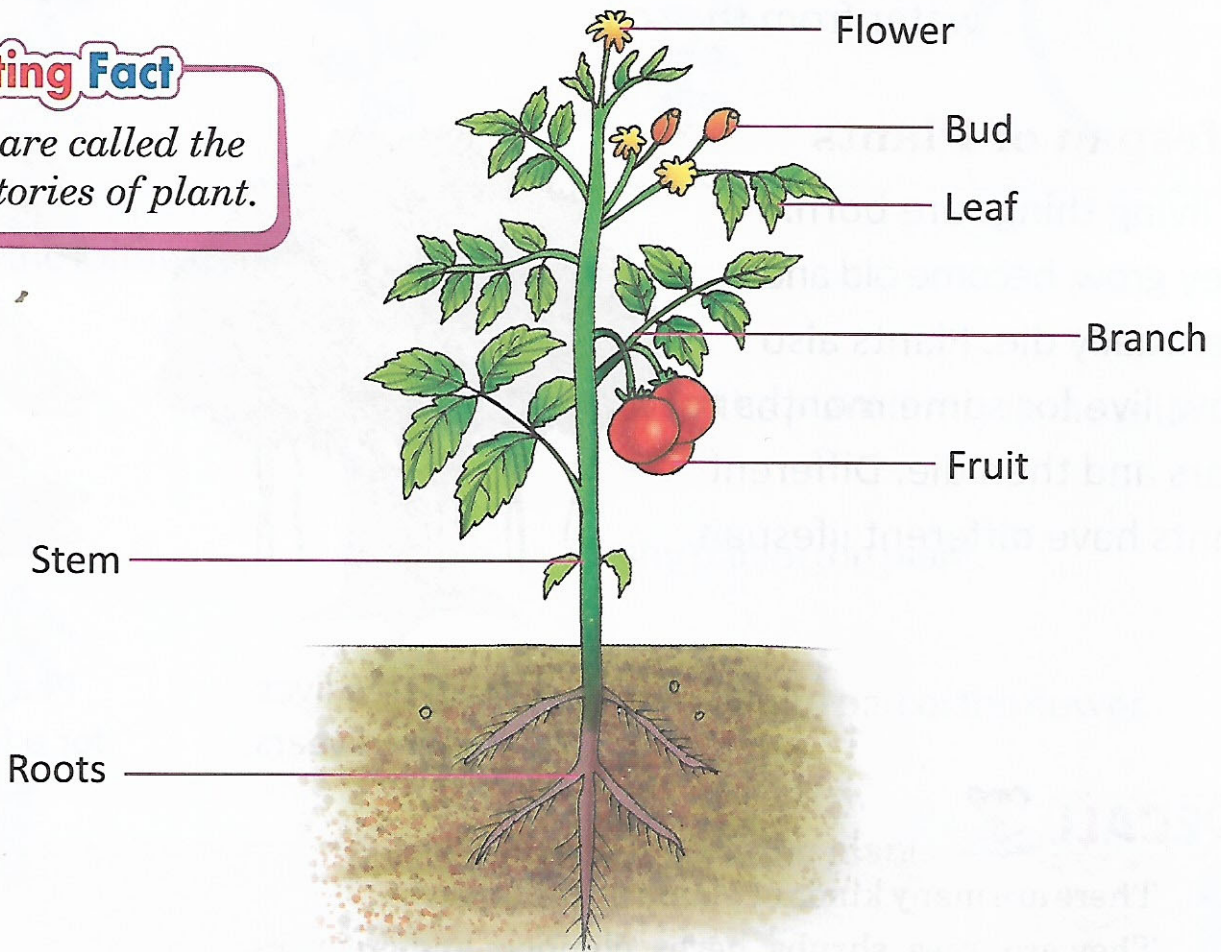
Watermelon plant

Parts of a Plant

A plant has many parts. Look at this plant and understand the uses of its different parts.

Fascinating Fact

Leaves are called the food factories of plant.



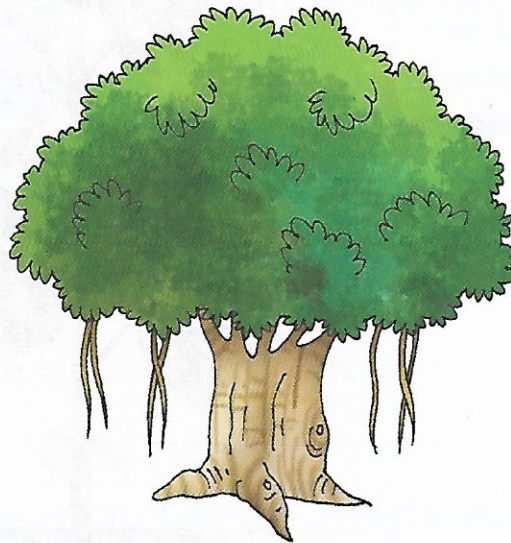
Oral Question

Which part of the plant changes into a flower ?

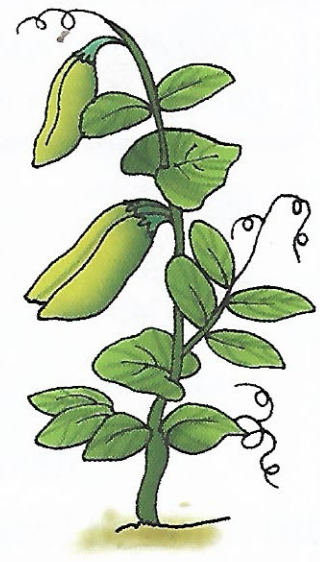
- Leaves :** Leaves are mostly green in colour. They make the food for the plant.
- Flower :** Flower is the most beautiful part of the plant. It changes into fruit.
- Fruit :** Fruit is the fleshy part of the plant that contains seeds.
- Stem :** Stem makes the plant stand straight. It supports all the parts of the plant. It carries food and water to all the other parts of the plant.
- Branch:** Branches bear leaves, flowers and fruits.
- Roots :** Roots fix the plant firmly in the soil. They absorb food and water from the soil.

Lifespan of Plants

All living things are born. They grow, become old and eventually die. Plants also grow, live for some months to years and then die. Different plants have different lifespan.



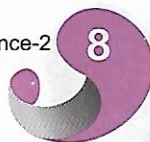
Banyan tree lives for hundred years.



Pea plant lives for a few months.

RECALL

- ❖ There are many kinds of plants all around us.
- ❖ They are trees, shrubs, herbs, climbers and creepers.
- ❖ A plant has many parts : roots, stem, leaves, flowers, buds, branches and fruits.
- ❖ Different plants have different lifespans.



Exercise



A. Tick (✓) the correct options :

1. _____ are big and tall plants.

a) Trees

b) Climbers

c) Shrubs

2. _____ live for one season only.

a) Shrubs

b) Trees

c) Herbs

3. Climbers climb on _____.

a) other plants

b) walls

c) both a) & b)

B. Name these plants :



C. Match the following :



a) They fix the plant firmly in the soil.



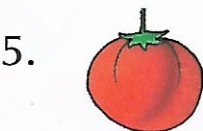
b) Fleshy part of the plant.



c) Most beautiful part of the flower.



d) It supports the plant.

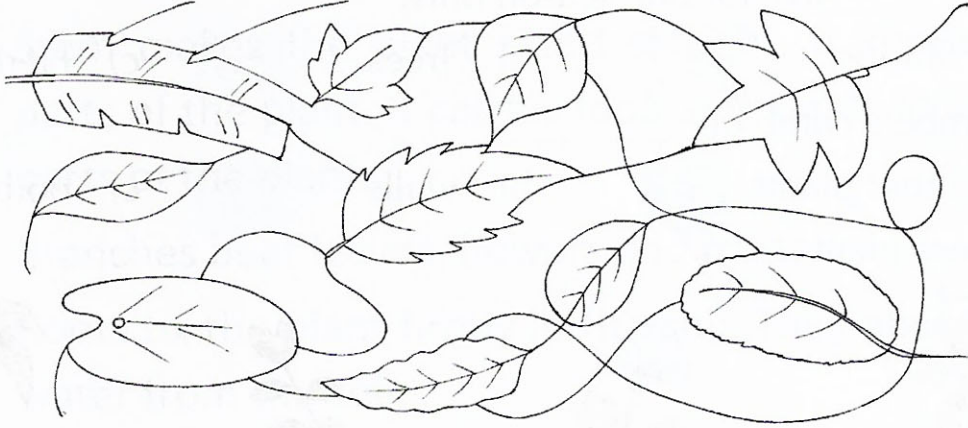


e) They make food for the plant.

Why will this plant die ?

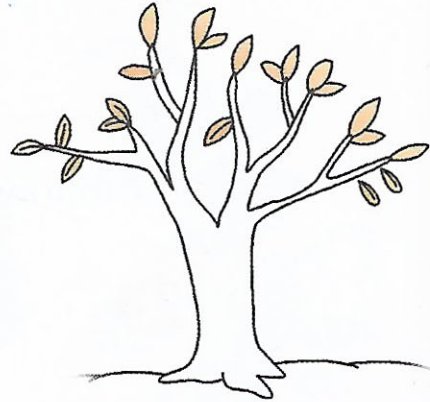
Things to do

A. Count the number of leaves in this puzzle by colouring them :



B. Make your own tree in a scrap book :

- ✦ Draw an outline of a tree in your scrapbook.
- ✦ Collect fallen leaves. Dry them and paste them in this outline of the tree.
- ✦ Colour the trunk brown.



Life Skill

Take care of plants

What will you do ?

